

KOURY

ENGINEERING
& TESTING, INC.

KET Project No.: 07-0542
KET Lab No.: 53679

June 27, 2007

To: Mr. John Leemhuis
Airfloor
1135 Harbor Hills Lane
Santa Barbara, CA 93109

RE: **Airfloor Form Compressive Strength Test**

*****Report of Test*****

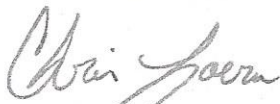
As requested, Koury Engineering & Testing, Inc. conducted compressive strength testing on (1) section of "Airfloor form". The following test procedure per your instructions was used:

(1) Airfloor form was formed on all four sides utilizing 2x6" lumber. Concrete was placed to a thickness of 1" above the center of the form. No reinforcement was used in the concrete.

The test was conducted after (2) days of concrete curing at a concrete strength of 2,020 psi. The strength of the concrete was determined by companion test specimens cast from the same batch of concrete used to cover the Airfloor form. The companion test samples and the Airfloor form test specimen were air cured at a temperature of approximately 70-80 °F.

The test specimen was placed between the crossheads of the testing machine with the 2x6" wood forms still in place. The load was applied utilizing a 6" diameter (28.27 in.²) steel disc centered over the Airfloor form at a rate of approximately 75 lbs/sec. **The ultimate compression load achieved was 3,750 lbs.**

Respectfully Submitted,
KOURY ENGINEERING & TESTING, INC.



Chris Loera
QA/ QC Manager



Shawn Arianna P.E.
Vice President of Engineering

Attachments (2) Pages – Test Data, Test Pictures

Corporate Office
17800 S. Main Street, Suite 303, Gardena, CA 90248-3553
Office: (310) 851-8685 • Fax: (310) 851-8692

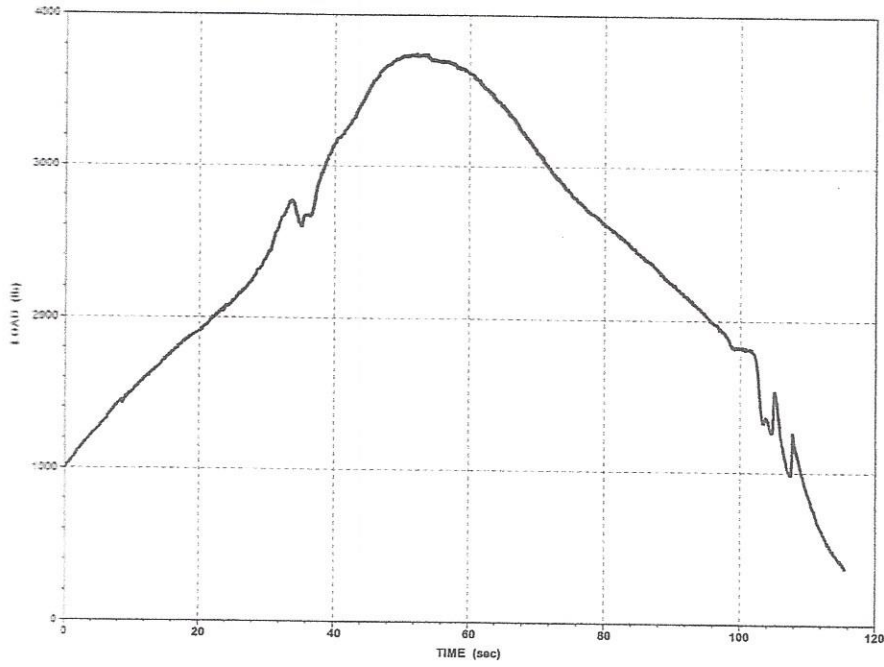
Ontario Branch Office
1236 W. Brooks Street, Ontario, CA 91762
Office: (909) 467-0104 • Fax (909) 460-7409

Specimen #:
Lab Technician:
Project No.:
Project Name:
Project Address:
Date Sampled:
Lab No.:

1
Chris Loera
07-0542
Airtloor
1135 Harbor Hills Lane, Santa Barbara, CA 93109
06/25/07
53679

Geometry:
Diameter:
Gage Length:
Area:

Round
6.0000 in
24.0000 in
28.2743 sq in

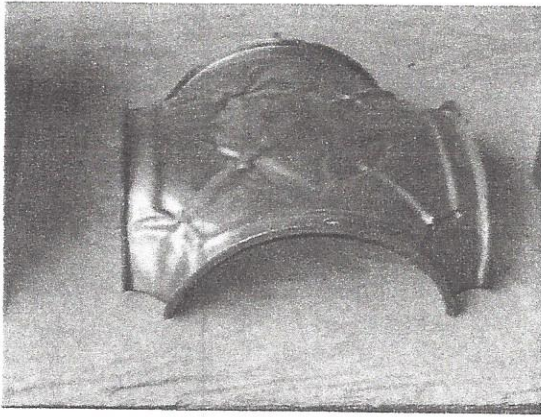


Date: 06/27/07

Time: 06:31:33
Elapsed: 00:01:55

Peak Load

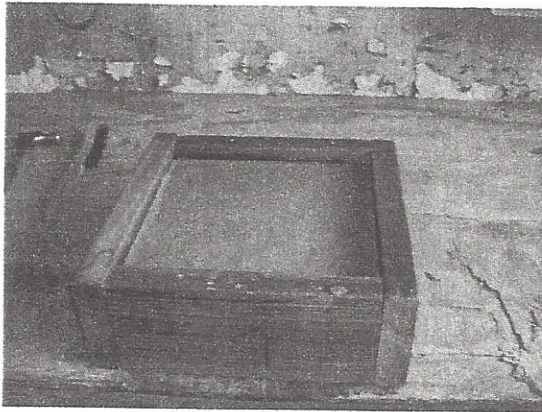
3750 lb



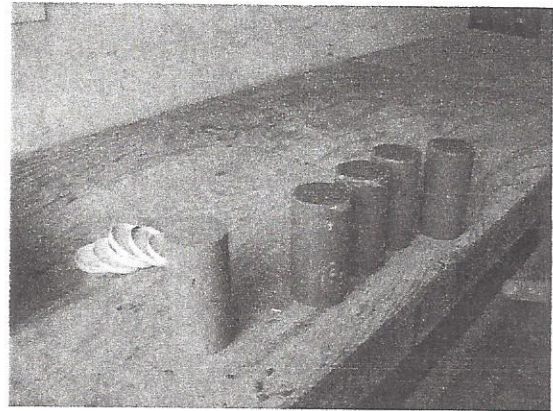
Picture 1
Airfloor Form



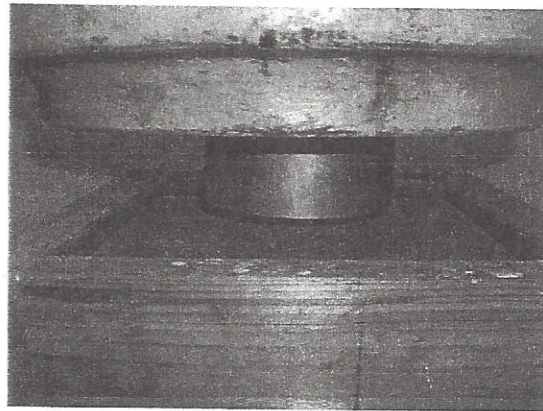
Picture 2
Airfloor Form and Concrete Form



Picture 3
Concrete Over Airfloor Form



Picture 4
Companion Test Specimens



Picture 5
Test Setup